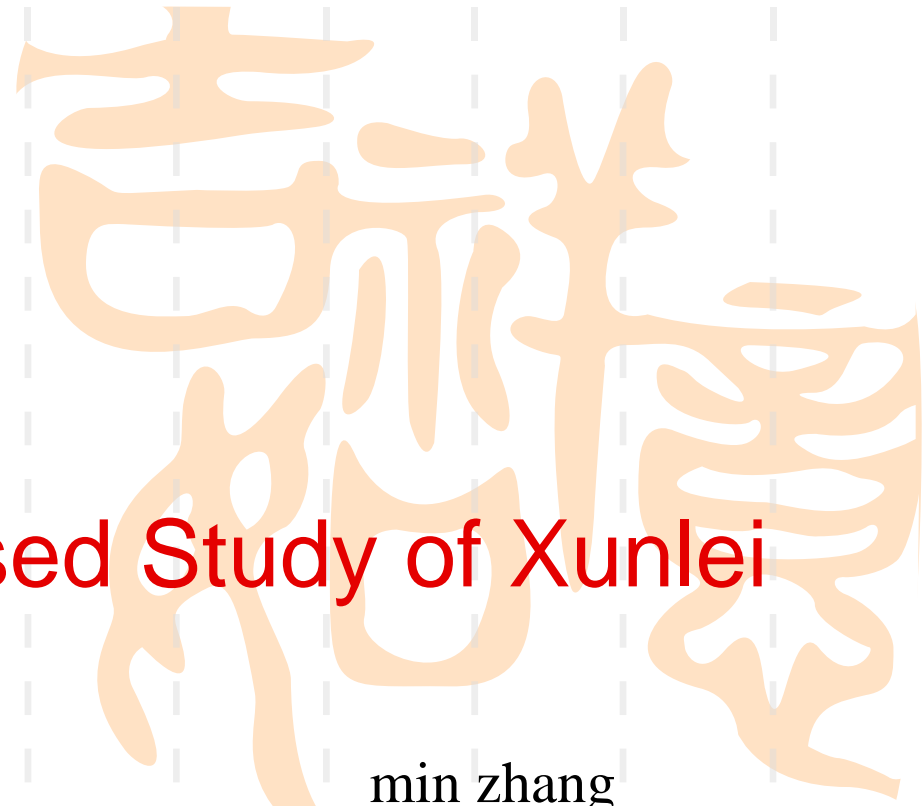


caida



A Measurement-Based Study of Xunlei




min zhang
changjia chen
nevil brownlee



What is Xunlei??



- Xunlei, 迅雷, Thunder 
- A P2P application, currently mainly used in China
 - integrate other open P2P file-sharing system; (BitTorrent, eDonkey, Kad)
 - IPTV



What is Xunlei??



- How popular?

- user number:

- over 80 million users (Wikipedia)

- 1,880 million users (Xunlei site)

- region limitation:

- no official English version

- only runs on Windows machines



Outline

吉祥

- Introduction
- Experiments

- Results

- Future works



Experiments



- Tools: Wireshark
- Two kinds of experiments:
 - Xunlei's architecture
 - Xunlei's behavior in downloading file from sites
- Our analysis based on: source and destination IP addresses, protocol, data bytes on packet level



Results-- architecture



- Xunlei system: servers + clients

- Xunlei servers cooperate effectively with clear-cut divisions of work

- client initialization, advertisement, file index, virus scan, pictures store.

- In eDonkey network, each server is mainly in charge of indexing files for clients

Results-- architecture

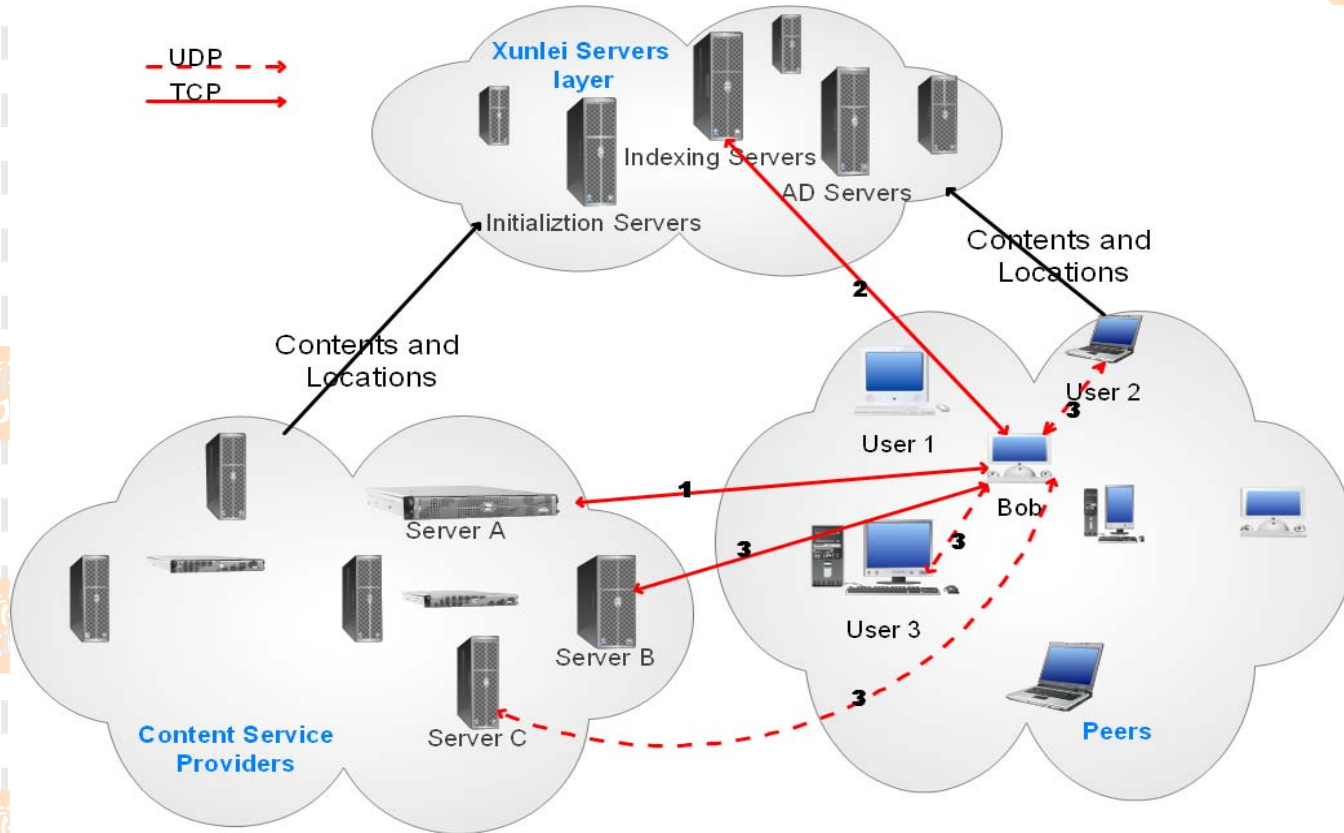
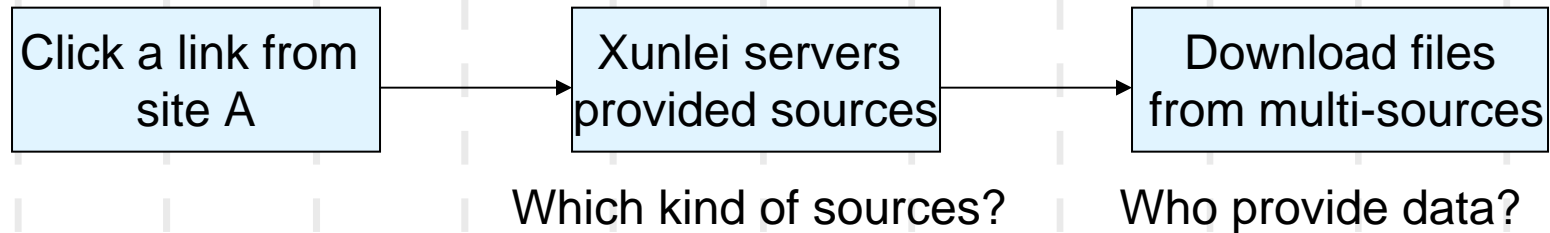


Figure 1: Diagram of Xunlei System

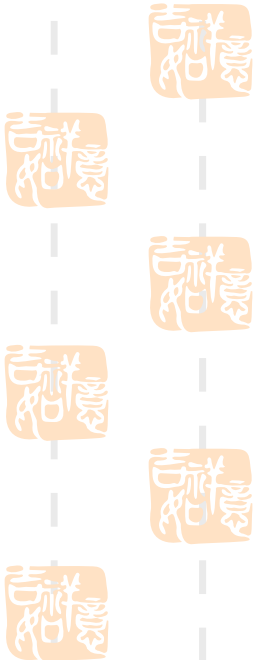


Results—evaluation of downloading



Sources:

- Clicked servers
- Unclicked servers
- peers



Results—evaluation of downloading

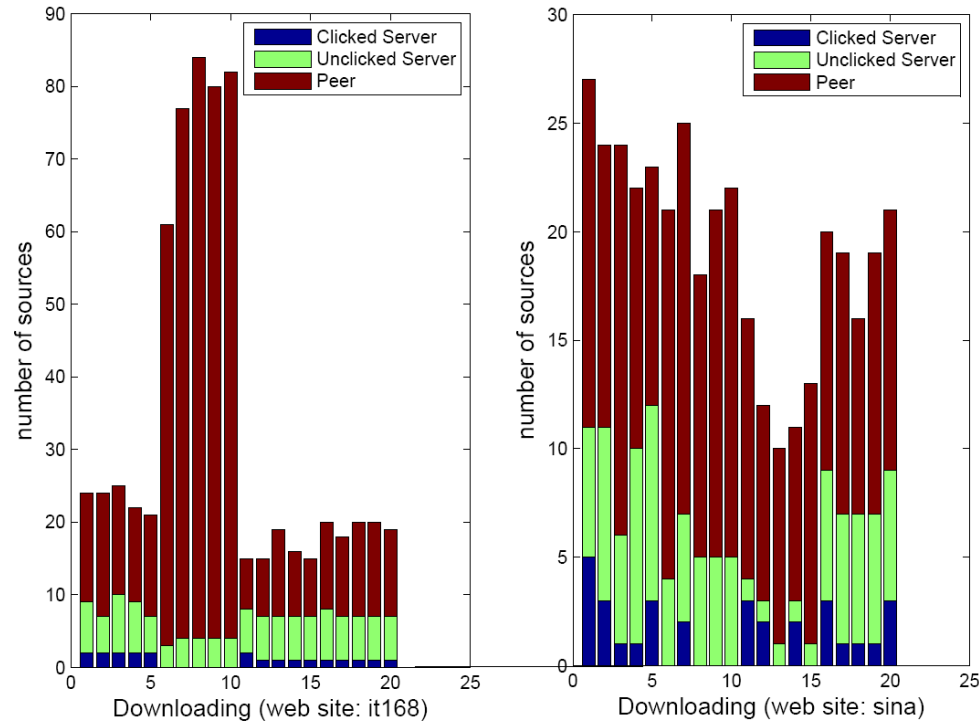


Figure 2: Number and types of sources Xunlei clients use to download data (forty experiments each to two portals sites)

Results—evaluation of downloading



- Data redundancy:

- Xunlei client downloads files from several sources; duplicate data?

- Calculate the data redundancy for each download.

- The results show that Xunlei's parallel downloading using its multi-sources manager works effectively for downloading from numerous sources



Results—evaluation of downloading



- Inappropriate behavior:

- Xunlei's behavior of downloading files from unclicked servers is arguably inappropriate, as it exploits the advertisement profits those servers would receive via true clicks, page view hits, etc.

- It balances loads among servers from the view of the whole Internet.



Future works



- Explore Xunlei's other aspects:
 - IPTV
 - Bulk-file sharing
 - Compatibility with uTorrent and eMule
- Design a business-driven information integration for making good use of Internet.



吉祥

- Any Questions?

