

Doxing the Docket: Analyzing Sealed U.S. Federal Court Cases

Ye Shu, Elisa Luo, Paul Chung, Geoff Voelker, Stefan Savage
UC San Diego

AIMS 19.
Work In Progress.

Background

☰ **CNN** US Crime + Justice

More than 500 student visas revoked as the government expands reasons for deportation

By Andy Rose and Carroll Alvarado, CNN

🕒 8 min read · Updated 3:57 PM EDT, Fri April 11, 2025



*CNN is wrong, because the main point is SEVIS termination instead of visa revocation...

Background

UNITED STATES DISTRICT COURT
DISTRICT OF NEW HAMPSHIRE

XIAOTIAN LIU,

Plaintiff,

v.

Search Clues

Case Number

1:25-cv-133

Sealed v. Sealed. This case is SEALED.

or search by

COMPLAINT FOR DECLARATORY AND INJUNCTIVE RELIEF

INTRODUCTION

1. On or about Friday, April 4, 2025, the United States Department of Homeland Security (“DHS”) unilaterally terminated the F-1 student status of numerous students throughout the United States under the SEVIS [Student and Exchange Visitor] system for unknown and unspecified reasons.¹ Plaintiff Xiaotian Liu is one of these students.

Why do we care about sealed cases?

- I want to know what happened to that student
- Court cases are generally public records
 - as established by SCOTUS
 - *Nixon v. Warner Communications, Inc.*, 435 U.S. 589 (1978)

A

It is clear that the courts of this country recognize a general right to inspect and copy public records and documents,⁷ including judicial records and documents.⁸ In contrast to the English practice, see, *e. g.*, *Browne v. Cumming*, 10 B. & C. 70,

Why do we care about sealed cases?

- I want to know what happened to that student
- Court cases are generally public records
 - as established by SCOTUS
 - Nixon v. Warner Communications, Inc., 435 U.S. 589 (1978)
- Transparency
 - “The [UK] Official Secrets Act is not to protect secrets, it is to protect officials”



UNITED STATES DISTRICT COURT

for the
Southern District of California

SEALED

In the Matter of the Search of)
(Briefly describe the property to be searched)
or identify the person by name and address)
7413 Canyon Breeze Drive, San Diego, CA)

Case No. '24 MJ3122 BLM

NOT FOR PUBLIC VIEW

WARRANT BY TELEPHONE OR OTHER RELIABLE ELECTRONIC MEANS

To: Any authorized law enforcement officer

An application by a federal law enforcement officer or an attorney for the government requests the search and seizure of the following person or property located in the Southern District of California (identify the person or describe the property to be searched and give its location):

See Attachment A-1, incorporated herein by reference.

I find that the affidavit(s), or any recorded testimony, establish probable cause to search and seize the person or property described above, and that such search will reveal (identify the person or describe the property to be seized):

See Attachment B, incorporated herein by reference.

YOU ARE COMMANDED to execute this warrant on or before August 29, 2024 (not to exceed 14 days)

in the daytime 6:00 a.m. to 10:00 p.m. at any time in the day or night because good cause has been established.

Unless delayed notice is authorized below, you must give a copy of the warrant and a receipt for the property taken to the person from whom, or from whose premises, the property was taken, or leave the copy and receipt at the place where the property was taken.

The officer executing this warrant, or an officer present during the execution of the warrant, must prepare an inventory as required by law and promptly return this warrant and inventory to Honorable Barbara L. Major (United States Magistrate Judge)

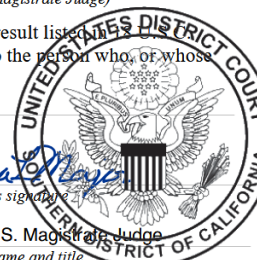
Pursuant to 18 U.S.C. § 3103a(b), I find that immediate notification may have an adverse result listed in § 2705 (except for delay of trial), and authorize the officer executing this warrant to delay notice to the person who, or whose property, will be searched or seized (check the appropriate box)

for ___ days (not to exceed 30) until, the facts justifying, the later specific date of

Date and time issued: 11:52 AM, Aug 15, 2024

City and state: San Diego, California

Barbara L. Major
Judge's signature
Barbara L. Major, U.S. Magistrate Judge
Printed name and title



Reasons for sealing

- Search/Arrest Warrants or Court Orders for criminal matters
- Criminal Indictment where the suspect is not in custody
- Qui Tam False Claims Act cases
- Cases with Temporary Restraining Order (TRO)

How many cases are currently sealed?

How do we determine which cases are sealed?

- Ground Truth: CM/ECF
- Report for all cases in a period
- Problem solved?

CM  ECF [Query](#) [Reports](#) [Utilities](#) [Help](#) [Log Out](#)

Criminal Cases Report

U.S. District Court -- Southern District of California
Filed Report Period: 1/1/2025 - 6/30/2025

Case Number/ Title	Case Dates	Days Pending	Notes
3:24-cr-00875-LL USA v. Espericueta	Case filed: 05/14/2024 Case reopened: 02/05/2025 Case closed: 02/06/2025		Office: San Diego Presider: Linda Lopez
1 - Regino Espericueta	Added: 05/14/2024 Reopened: 02/05/2025 Closed: 02/06/2025		Presider: Linda Lopez
3:25-cr-00001-SBC USA v. Frias	Case filed: 01/02/2025 Case closed: 01/02/2025		Office: San Diego
1 - Rene Frias	Added: 01/02/2025 Closed: 01/02/2025		Presider: Steve B. Chu
3:25-cr-00002-AGS USA v. Urena-Villalobos	Case filed: 01/06/2025		Office: San Diego
1 - Kevin Urena-Villalobos	Added: 01/06/2025	238	Presider: Andrew G. Schopler
3:25-cr-00003-WQH USA v. Duenas-Robles	Case filed: 01/02/2025 Case closed: 08/11/2025		Office: San Diego
1 - Carlos Duenas-Robles	Added: 01/02/2025 Closed: 08/11/2025		Presider: William Q. Hayes
3:25-cr-00004-IR USA v. Zaragoza-Sanchez	Case filed: 01/02/2025 Case closed: 01/21/2025		Office: San Diego
1 - Isaac Zaragoza-Sanchez	Added: 01/02/2025 Closed: 01/21/2025		Presider: Lupe Rodriguez, Jr.
3:25-cr-00005-TWR USA v. Rosales-Jara	Case filed: 01/02/2025 Case closed: 07/02/2025		Office: San Diego
1 - Heriberto Rosales-Jara	Added: 01/02/2025 Closed: 07/02/2025		Presider: Todd W. Robinson
3:25-cr-00006-JLS USA v. De La Cruz	Case filed: 01/02/2025		Office: San Diego
1 - Elisa De La Cruz	Added: 01/02/2025	242	Presider: Janis L. Sammartino
3:25-cr-00007-TWR USA v. Contreras Medina	Case filed: 01/02/2025 Case closed: 02/24/2025		Office: San Diego

Problem: \$\$\$

- Public records aren't free!
- CM/ECF charges you \$0.10 per page

Grand Total:

122112 pages

0 audio files (\$2.40 each)

- \$12 211.2 just for 20/94 district courts in most recent five years
 - Becomes expensive if you want to continuously track!

Free Alternatives?

- Yes!
- CourtListener
- Free data on unsealed cases.
- => ground negative



Refine Your Query

Select Jurisdictions ¹

Search Results Order:

Oldest Cases First ▾

Only show results with PDFs

Case Name:

Document Description:

Docket Number:

25-cr

Nature of Suit:

Cause:

Docket Date Calendar Relative

Filed After

Filed Before

Entry Date Calendar Relative

Filed After

Filed Before

 Search

[Query Help](#)

The results below were contributed to the RECAP Archive by users of the RECAP Extension. If you use PACER, please install RECAP. [Learn More](#)

About 9,500 Cases and 66,000 Docket Entries

206ms

United States v. Hernandez-Lopez (S.D. Cal. 2025)

Docket Number: 3:25-cr-00017 Date Filed: January 2nd, 2025 Date Terminated: January 6th, 2025
Parties: United States, Hernandez-Lopez

United States v. Ordonez (S.D. Cal. 2025)

Docket Number: 3:25-cr-00022 Date Filed: January 2nd, 2025 Date Terminated: February 3rd, 2025
Parties: United States, Ordonez

United States v. Palmer Lopez (S.D. Cal. 2025)

Docket Number: 3:25-cr-00032 Date Filed: January 2nd, 2025 Parties: United States, Palmer Lopez

United States v. De Jesus Guillen (S.D. Cal. 2025)

Docket Number: 3:25-cr-00033 Date Filed: January 2nd, 2025 Date Terminated: March 28th, 2025
Parties: United States, De Jesus Guillen

[Sentence With CR History Report — Document #](#)

Date Filed: March 28th, 2025

...

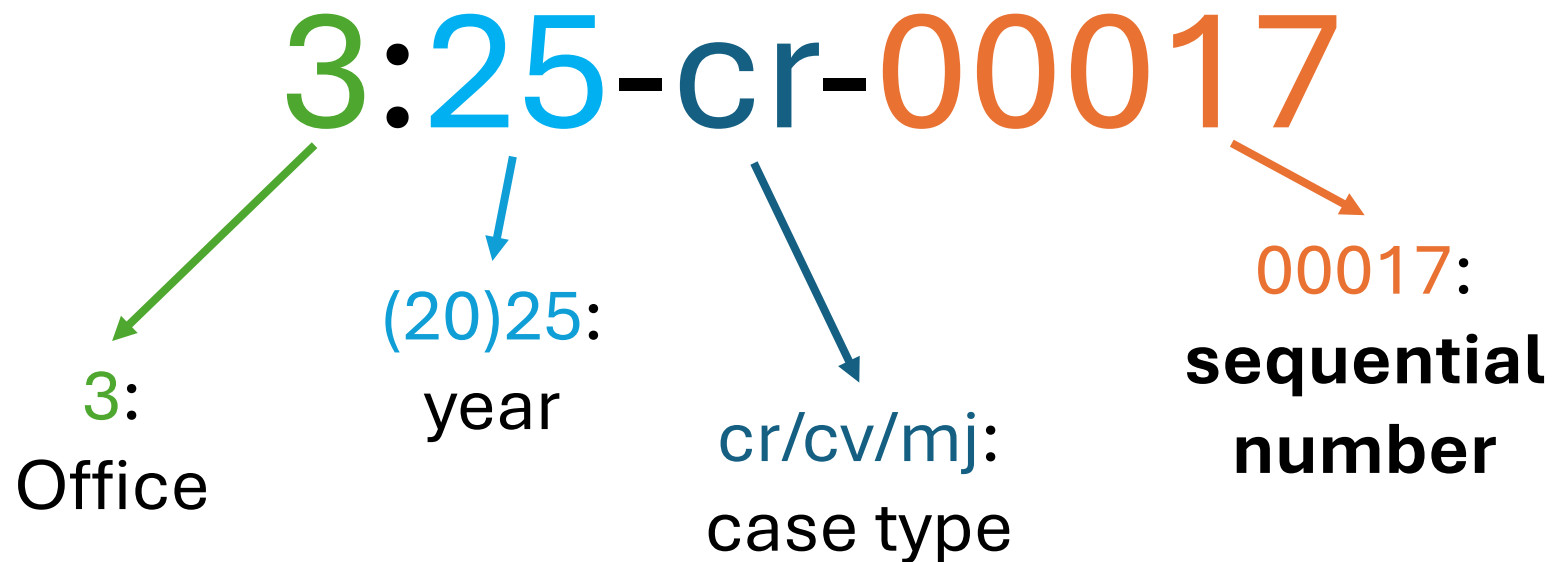
[Arraignment \(w/ Schedules\) — Document #](#)

Date Filed: January 3rd, 2025

...

Case Number Sequences!

- Each case come with a unique number within the court.



Problems

- Different courts number things differently.
- Some districts have unified numbering across offices
 - Others are separate
- Some districts allocate number ranges for special purposes



District	Civil (cv)			Criminal (cr)			Magistrate (mj)		
	ECF (%)	CL (%)	Diff (%)	ECF (%)	CL (%)	Diff (%)	ECF (%)	CL (%)	Diff (%)
prd	3.97	4.42	0.45	2.33	2.12	-0.21	73.81	72.95	-0.86
nysd	0.19	0.19	0.01	2.71	4.98	2.27	60.42	73.83	13.41
pawd	0.21	0.21	0.00	0.00	0.29	0.29	92.30	90.20	-2.10
scd	0.11	1.56	1.45	23.12	25.67	2.55	9.09	10.87	1.78
ncwd	0.35	3.23	2.88	0.71	2.34	1.62	73.54	75.72	2.18
lawd	0.11	1.15	1.04	0.69	2.71	2.02	7.41	9.09	1.68
laed [‡]	0.06	10.35	10.29	1.05	1.74	0.69	34.85	35.07	0.23
lamd	0.06	1.53	1.47	0.00	4.46	4.46	60.17	60.50	0.33
txnd	0.30	2.04	1.74	0.95	1.52	0.57	59.20	72.13	12.93
miwd	0.00	1.90	1.90	2.84	3.93	1.09	75.75	77.81	2.07
ohnd	0.20	0.53	0.32	1.50	1.95	0.44	76.75	75.45	-1.31
ilsd [‡]	0.00	74.01	74.01	1.99	3.90	1.91	86.31	82.33	-3.98
insd	0.15	1.23	1.09	0.37	0.73	0.36	89.20	88.66	-0.54
casd	0.34	0.34	0.00	0.75	0.61	-0.14	20.04	22.99	2.95
nvd*	1.04	0.46	-0.57	3.56	4.12	0.56	56.30	54.95	-1.35
ord	0.36	1.81	1.45	2.42	3.36	0.94	12.73	12.33	-0.40
waed	0.92	2.47	1.54	1.64	4.00	2.36	89.96	87.15	-2.82
oknd*	0.18	0.53	0.35	1.22	1.22	0.00	51.83	51.83	-0.01
okwd	0.17	0.25	0.08	0.38	0.75	0.37	46.71	46.95	0.24
gand*	0.25	0.36	0.12	-	2.14	-	-	67.70	-
Total	0.26	6.56	6.30	3.15	4.07	0.92	57.27	61.05	3.78

Result

- Cases filed in 2023.
- Observation 1
- Sealing rate:
Civil <
Criminal <
Magistrate
- Expected!

District	Civil (cv)			Criminal (cr)			Magistrate (mj)		
	ECF (%)	CL (%)	Diff (%)	ECF (%)	CL (%)	Diff (%)	ECF (%)	CL (%)	Diff (%)
prd	3.97	4.42	0.45	2.33	2.12	-0.21	73.81	72.95	-0.86
nysd	0.19	0.19	0.01	2.71	4.98	2.27	60.42	73.83	13.41
pawd	0.21	0.21	0.00	0.00	0.29	0.29	92.30	90.20	-2.10
scd	0.11	1.56	1.45	23.12	25.67	2.55	9.09	10.87	1.78
ncwd	0.35	3.23	2.88	0.71	2.34	1.62	73.54	75.72	2.18
lawd	0.11	1.15	1.04	0.69	2.71	2.02	7.41	9.09	1.68
laed [‡]	0.06	10.35	10.29	1.05	1.74	0.69	34.85	35.07	0.23
lamd	0.06	1.53	1.47	0.00	4.46	4.46	60.17	60.50	0.33
txnd	0.30	2.04	1.74	0.95	1.52	0.57	59.20	72.13	12.93
miwd	0.00	1.90	1.90	2.84	3.93	1.09	75.75	77.81	2.07
ohnd	0.20	0.53	0.32	1.50	1.95	0.44	76.75	75.45	-1.31
ilsd [‡]	0.00	74.01	74.01	1.99	3.90	1.91	86.31	82.33	-3.98
insd	0.15	1.23	1.09	0.37	0.73	0.36	89.20	88.66	-0.54
casd	0.34	0.34	0.00	0.75	0.61	-0.14	20.04	22.99	2.95
nvd*	1.04	0.46	-0.57	3.56	4.12	0.56	56.30	54.95	-1.35
ord	0.36	1.81	1.45	2.42	3.36	0.94	12.73	12.33	-0.40
waed	0.92	2.47	1.54	1.64	4.00	2.36	89.96	87.15	-2.82
oknd*	0.18	0.53	0.35	1.22	1.22	0.00	51.83	51.83	-0.01
okwd	0.17	0.25	0.08	0.38	0.75	0.37	46.71	46.95	0.24
gand*	0.25	0.36	0.12	-	2.14	-	-	67.70	-
Total	0.26	6.56	6.30	3.15	4.07	0.92	57.27	61.05	3.78

- Observation 2
- We can get decent results from free data!
- Outliers due to different numbering scheme and fixable.

District	Civil (cv)			Criminal (cr)			Magistrate (mj)		
	ECF (%)	CL (%)	Diff (%)	ECF (%)	CL (%)	Diff (%)	ECF (%)	CL (%)	Diff (%)
Our 2023	0.26	6.56	6.30	3.15	4.07	0.92	57.27	61.05	3.78
FJC 2006		0.20			1.6			16	

- Observation 3:
- Compare with Federal Judiciary Center study on 2006 cases
- 2x criminal and 3.5x magistrate cases are being sealed
- Increase cannot be explained by increase in criminal/warrant caseload

How many cases were historically sealed?

We are the first study on them!

CourtListener Timestamps

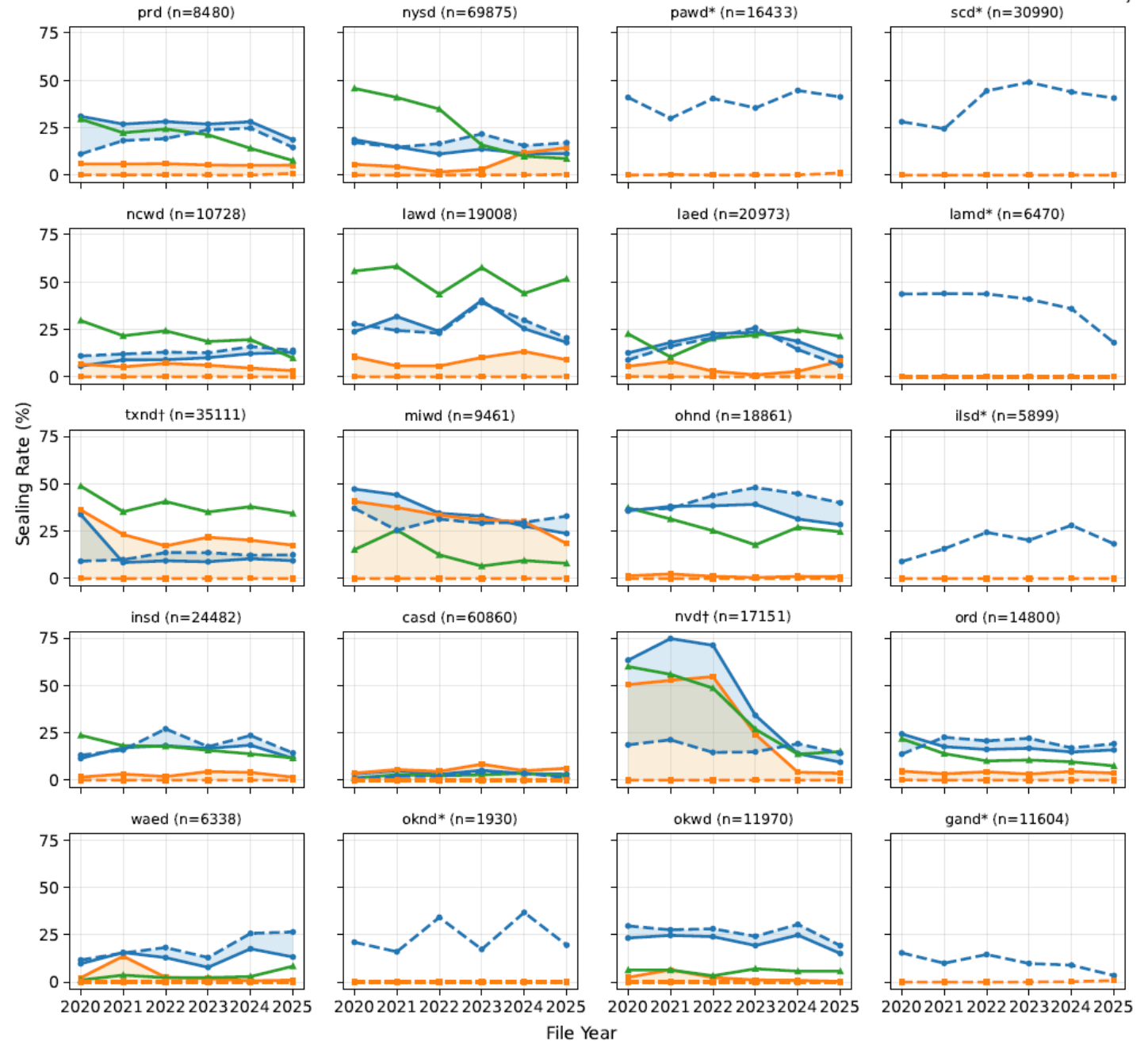
- Date case is filed
- Date case becomes public
 - Date CourtListener adds the case to their DB
- Difference => case was sealed.
- Limitation:
 - Depends on CourtListener's coverage
 - Bad in some districts (known a priori because they don't provide RSS)

Results

- 18% of CR, 0.1% of CV, and ~24% of MJ.
- Estimate generally good.
- Overestimating CV?

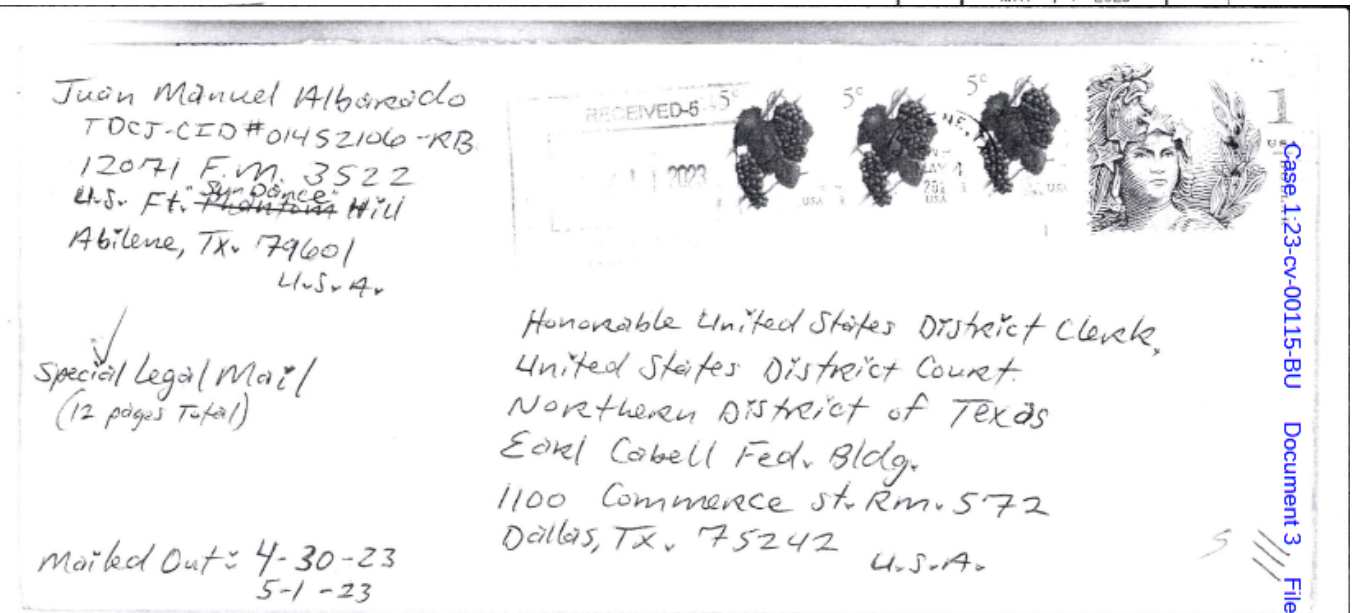
Rate of Historically Sealed (Currently Unsealed) Cases per District
 Solid: IDB cr/cv Methodologies. Dashed: CourtListener Inference
 Fixed threshold: 4 days

Data Source Case type
 CL cr
 IDB cv
 Diff. mj
 scd* (n=30990)



CV Anomalies

- Paper filed complaints from inmates
 - Mandamus, Civil Rights, Habeas corpus, ...
- Filing Delays
 - Entered into CM/ECF by court clerks manually
 - Backdated to date receive/mailed



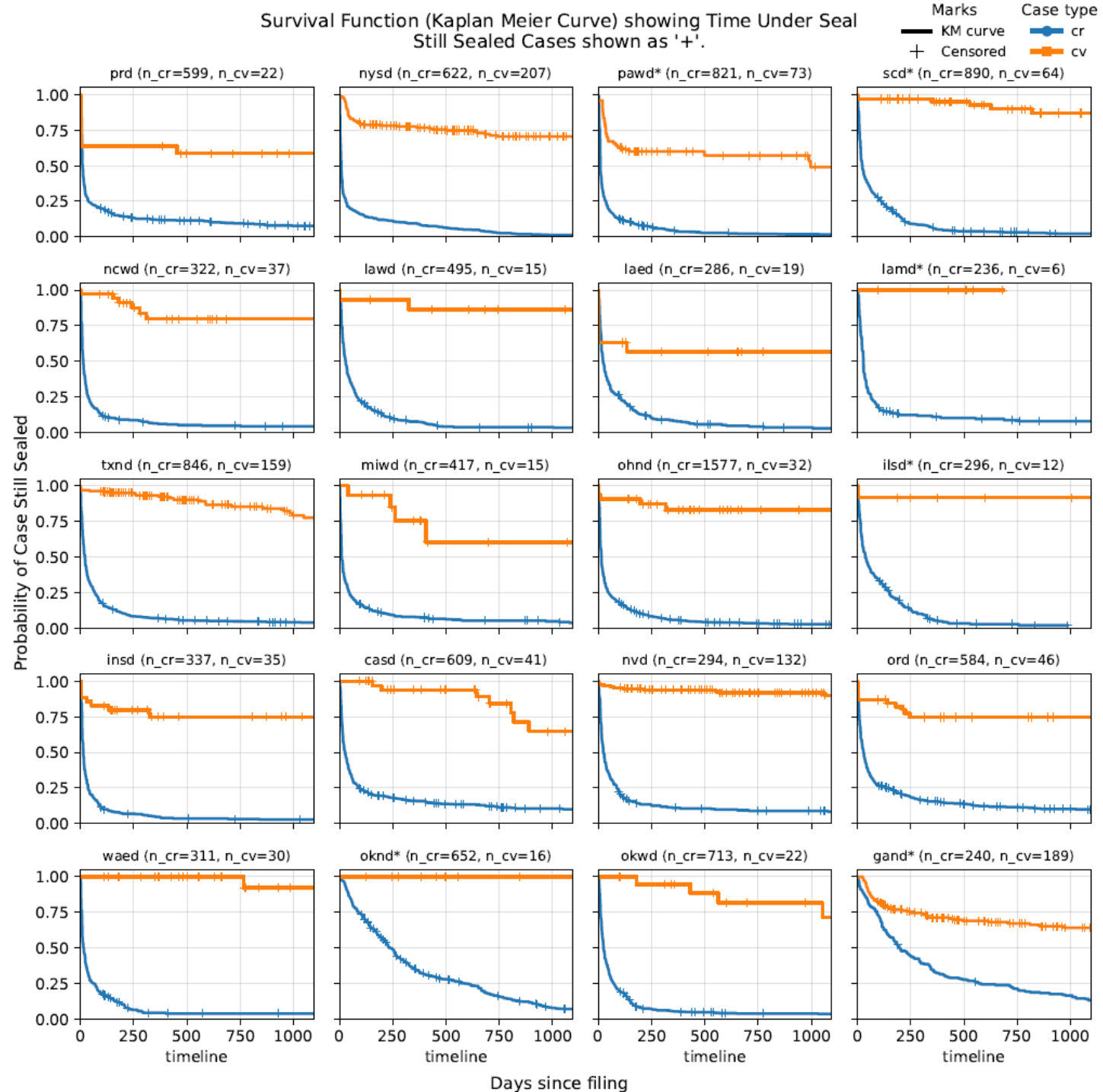
II. VENUE

This is the proper venue for this action because the

Can we estimate how long each cases are sealed?

Results & Takeaway

- Criminal: usually unsealed very quickly (median 30 days)
- Civil: much longer, and most (72%) remain sealed until today!



Summary

- Contemporary analysis of currently sealed cases.
 - Substantive increase in magistrate cases that is unexplained.
- We can use free data to approximate these results well enough.
- First longitudinal study on case sealing
 - 1/5 of criminal cases were once sealed, but only for short duration.
 - Civil cases are rarely sealed, but when they do, they remain sealed for a long time, potentially indefinitely.
- We're looking for suitable homes for this paper!

District	Name	Circuit	IDB	CM/ECF	CL	Numbering
prd	D. Puerto Rico	1	Y	Y	✓	Unified
nysd	S.D. New York	2	Y	Y	○	Unified
pawd	W.D. Pennsylvania	3	Y	Y	▲	Separate
scd	D. South Carolina	4	Y	Y	▲	Unified
ncwd	W.D. North Carolina	4	Y	Y	✓	Separate
lawd	W.D. Louisiana	5	Y	Y	✓	Unified*
laed	E.D. Louisiana	5	Y	Y	✓	Unified‡
lamd	M.D. Louisiana	5	Y	Y	▲	Unified
txnd	N.D. Texas	5	Y	Y	○ [†]	Separate
miwd	W.D. Michigan	6	Y	Y	○	Separate
ohnd	N.D. Ohio	6	Y	Y	○	Unified
ilsd	S.D. Illinois	7	Y	Y	▲	Unified‡
insd	S.D. Indiana	7	Y	Y	○	Separate
casd	S.D. California	9	Y	Y	✓	Unified
nvd	D. Nevada	9	Y	Y	✓ [†]	Separate
ord	D. Oregon	9	Y	Y	✓	Unified*
waed	E.D. Washington	9	Y	Y	✓	Unified
oknd	N.D. Oklahoma	10	Y	Y	✗	Unified
okwd	W.D. Oklahoma	10	Y	Y	✓	Unified
gand	N.D. Georgia	11	Y	Y*	✗	Separate

Table 1. The twenty U.S. district courts included in this study and their characteristics. The legend for this table is as follows: **IDB**: whether the district uses sealing-related proceeding codes in at least 5% of their criminal cases over the past ten years. **CM/ECF**: the district CM/ECF provides overall civil, criminal and magistrate reports (note: gand has a unique version that does not report sealed criminal or magistrate cases) **CL**: ✓ indicates that CourtListener’s data utilizes full RSS coverage for the district and satisfies our empirical timeliness tests. ○ indicates that CourtListener’s data utilizes partial RSS coverage for the district and satisfies our empirical timeliness tests. ▲ indicates that CourtListener’s data utilizes some RSS coverage for the district but does not satisfy our empirical timeliness tests. ✗ indicates that CourtListener’s data does not utilize RSS coverage for the district and does not satisfy our empirical timeliness tests, as expected. † indicates that the court introduced their RSS feed partway in our study period, leading to changes in CourtListener’s coverage. **Numbering**: whether the district uses a unified case numbering system or separate numbering across all offices. ‡ indicates that the district mixes numbering systems across case types. * indicates exceptions to the general pattern.

Proportion of Cases With Seal-Related PROCCD (9, 19, 22, 23, 24, 25, 26)

District	2015	2016	2017	2018	2019	2020	2021	2022	2023	2024	2025
Alabama - Middle	0.019	0.037	0.026	0.022	0.005	0.009	0.013				
Alabama - Northern		0.002	0.008	0.091	0.314	0.351	0.341	0.320	0.286	0.245	0.169
Alabama - Southern	0.093	0.103	0.045	0.021	0.017	0.013	0.033	0.108	0.155	0.045	0.065
Alaska	0.148	0.218	0.255	0.253	0.190	0.188	0.170	0.202	0.242	0.448	0.462
Arizona	0.006	0.005	0.004	0.002	0.002	0.002	0.002	0.006	0.004	0.001	0.003
Arkansas - Eastern	0.324	0.268	0.289	0.223	0.262	0.407	0.454	0.595	0.564	0.448	0.449
Arkansas - Western	0.008	0.005			0.011	0.024	0.006	0.013	0.007		
California - Central	0.108	0.082	0.069	0.094	0.074	0.094	0.110	0.138	0.244	0.324	0.247
California - Eastern			0.002			0.004	0.003		0.005	0.004	
California - Northern	0.179	0.209	0.148	0.173	0.264	0.162	0.199	0.219	0.252	0.210	0.192
California - Southern	0.025	0.018	0.027	0.023	0.024	0.019	0.032	0.028	0.058	0.050	0.022
Colorado	0.734	0.736	0.744	0.645	0.703	0.682	0.634	0.614	0.659	0.633	0.704
Connecticut	0.223	0.169	0.179	0.242	0.264	0.368	0.247	0.249	0.273	0.252	0.243
Delaware	0.191	0.211	0.211	0.165	0.073	0.136	0.188	0.218	0.235	0.307	0.119
District of Columbia	0.274	0.305	0.247	0.306	0.268	0.234	0.278	0.345	0.345	0.435	0.294
Florida - Middle	0.018	0.020	0.006	0.012	0.009	0.015	0.007	0.006	0.001	0.001	
Florida - Northern	0.122	0.093	0.104	0.105	0.056	0.033	0.052	0.113	0.141	0.166	0.132
Florida - Southern				0.001	0.001		0.001	0.003	0.004	0.050	0.008
Georgia - Middle	0.056	0.035	0.056	0.083	0.110	0.115	0.112	0.103	0.081	0.155	0.043
Georgia - Northern	0.157	0.178	0.186	0.159	0.102	0.106	0.109	0.098	0.074	0.095	0.083
Georgia - Southern	0.017	0.058	0.034	0.089	0.040	0.084	0.086	0.127	0.155	0.133	0.140
Guam	0.061	0.095	0.278	0.250	0.479	0.281	0.467	0.667	0.688	0.806	0.500
Hawaii	0.158	0.237	0.252	0.293	0.114	0.107	0.131	0.143	0.217	0.173	0.261
Idaho	0.047	0.040	0.062	0.043	0.024	0.017	0.007	0.016	0.007	0.043	0.035
Illinois - Central	0.004		0.007			0.003	0.005				
Illinois - Northern		0.002		0.003	0.002	0.002	0.002				
Illinois - Southern	0.300	0.166	0.271	0.263	0.283	0.193	0.228	0.290	0.260	0.303	0.314
Indiana - Northern	0.349	0.331	0.434	0.365	0.412	0.408	0.430	0.405	0.456	0.537	0.465
Indiana - Southern	0.180	0.247	0.225	0.229	0.210	0.165	0.202	0.285	0.213	0.254	0.186
Iowa - Northern	0.398	0.432	0.355	0.471	0.484	0.552	0.584	0.612	0.555	0.584	0.552
Iowa - Southern	0.972	0.964	0.971	0.976	0.967	0.971	0.950	0.928	0.966	0.957	0.943
Kansas	0.153	0.144	0.175	0.230	0.274	0.300	0.278	0.335	0.314	0.390	0.286
Kentucky - Eastern	0.133	0.108	0.120	0.088	0.113	0.105	0.155	0.091	0.140	0.131	0.110
Kentucky - Western	0.175	0.186	0.140	0.145	0.159	0.158	0.137	0.173	0.403	0.516	0.479
Louisiana - Eastern	0.084	0.121	0.124	0.139	0.160	0.152	0.237	0.275	0.302	0.183	0.160
Louisiana - Middle	0.325	0.353	0.370	0.401	0.405	0.516	0.494	0.489	0.447	0.379	0.408
Louisiana - Western	0.410	0.229	0.231	0.290	0.279	0.378	0.342	0.317	0.454	0.365	0.367
Maine	0.236	0.117	0.135	0.208	0.092	0.073	0.091	0.133	0.246	0.228	0.174
Maryland	0.129	0.139	0.124	0.107	0.111	0.182	0.164	0.060	0.090	0.124	0.074
Massachusetts	0.209	0.261	0.213	0.268	0.181	0.197	0.279	0.227	0.248	0.248	0.142
Michigan - Eastern	0.162	0.187	0.182	0.157	0.175	0.156	0.197	0.182	0.161	0.199	0.114
Michigan - Western	0.270	0.227	0.294	0.340	0.322	0.416	0.311	0.350	0.337	0.346	0.431
Minnesota	0.358	0.332	0.343	0.434	0.473	0.598	0.541	0.560	0.605	0.706	0.810
Mississippi - Northern	0.038			0.007	0.021	0.029			0.007	0.007	
Mississippi - Southern	0.225	0.243	0.272	0.334	0.453	0.428	0.414	0.444	0.406	0.507	0.436
Missouri - Eastern	0.008	0.016	0.010	0.008	0.012	0.019	0.037	0.046	0.041	0.036	0.019
Missouri - Western	0.100	0.106	0.146	0.200	0.263	0.369	0.342	0.309	0.359	0.324	0.341
Montana	0.658	0.720	0.823	0.949	0.954	0.958	0.956	0.957	0.976	0.945	0.950
Nebraska	0.404	0.530	0.406	0.370	0.403	0.474	0.483	0.478	0.458	0.434	0.305
Nevada	0.055	0.106	0.122	0.197	0.208	0.224	0.241	0.149	0.188	0.233	0.275
New Hampshire	0.215	0.156	0.127	0.193	0.151	0.142	0.222	0.212	0.165	0.151	0.140
New Jersey	0.046	0.035	0.051	0.066	0.069	0.041	0.058	0.062	0.041	0.068	0.068
New Mexico	0.004	0.003	0.005	0.002	0.007	0.007	0.009	0.008	0.005	0.007	0.005
New York - Eastern	0.219	0.240	0.337	0.340	0.318	0.359	0.410	0.446	0.404	0.523	0.497
New York - Northern	0.102	0.029	0.067	0.011	0.007	0.021	0.005	0.009	0.008		0.013
New York - Southern	0.186	0.153	0.162	0.186	0.228	0.216	0.187	0.198	0.234	0.171	0.180
New York - Western	0.110	0.068	0.079	0.065	0.097	0.127	0.120	0.091	0.069	0.067	0.085
North Carolina - Eastern	0.011	0.031	0.038	0.107	0.076	0.220	0.071	0.054	0.050	0.066	0.101
North Carolina - Middle	0.044	0.028	0.013	0.037	0.023	0.028	0.017	0.041	0.107	0.037	0.020
North Carolina - Western	0.074	0.114	0.077	0.166	0.104	0.131	0.144	0.146	0.160	0.171	0.203
North Dakota	0.968	0.960	0.965	0.995	0.908	0.896	0.943	0.974	0.996	0.972	0.979
Northern Mariana Islands	0.118	0.200	0.200	0.176	0.133		0.056		0.217	0.478	0.571
Ohio - Northern	0.198	0.163	0.173	0.209	0.395	0.429	0.433	0.508	0.523	0.490	0.439
Ohio - Southern	0.048	0.046	0.051	0.096	0.096	0.093	0.073	0.086	0.128	0.116	0.051
Oklahoma - Eastern	0.381	0.386	0.487	0.500	0.459	0.236	0.241	0.503	0.483	0.502	0.386
Oklahoma - Northern	0.231	0.217	0.211	0.271	0.307	0.250	0.257	0.266	0.264	0.363	0.321
Oklahoma - Western	0.179	0.147	0.209	0.144	0.204	0.258	0.235	0.279	0.235	0.304	0.239
Oregon	0.070	0.122	0.102	0.222	0.164	0.194	0.302	0.271	0.300	0.237	0.284
Pennsylvania - Eastern	0.422	0.333	0.361	0.346	0.371	0.379	0.443	0.368	0.408	0.450	0.400
Pennsylvania - Middle	0.159	0.149	0.149	0.100	0.110	0.228	0.129	0.156	0.127	0.121	0.219
Pennsylvania - Western	0.333	0.307	0.326	0.378	0.400	0.454	0.339	0.443	0.376	0.457	0.477
Puerto Rico	0.133	0.096	0.142	0.155	0.091	0.154	0.209	0.229	0.278	0.292	0.204
Rhode Island				0.007							
South Carolina	0.102	0.159	0.177	0.260	0.253	0.282	0.411	0.495	0.534	0.478	0.450
South Dakota	0.017	0.012	0.023	0.020	0.017	0.019	0.012	0.027	0.010	0.009	0.014
Tennessee - Eastern	0.260	0.175	0.172	0.163	0.172	0.127	0.139	0.129	0.140	0.206	0.157
Tennessee - Middle	0.007						0.004		0.007		
Tennessee - Western	0.014		0.029	0.072	0.009	0.019	0.020	0.025	0.015	0.016	0.044
Texas - Eastern	0.378	0.398	0.411	0.371	0.416	0.464	0.467	0.440	0.473	0.561	0.553
Texas - Northern	0.100	0.088	0.103	0.146	0.125	0.122	0.143	0.162	0.165	0.148	0.135
Texas - Southern	0.000	0.001		0.000	0.000	0.001	0.000	0.001		0.000	
Texas - Western	0.053	0.054	0.049	0.030	0.029	0.038	0.043	0.039	0.035	0.038	0.025
Utah	0.115	0.110	0.118	0.175	0.187	0.251	0.321	0.283	0.277	0.233	0.193
Vermont	0.285	0.340	0.345	0.236	0.373	0.406	0.333	0.321	0.303	0.321	0.267
Virgin Islands	0.133	0.227	0.292	0.154	0.096	0.096	0.227	0.196	0.096	0.041	0.088
Virginia - Eastern	0.026	0.045	0.052	0.055	0.080	0.060	0.051	0.054	0.047	0.037	0.046
Virginia - Western	0.276	0.306	0.249	0.155	0.231	0.218	0.198	0.252	0.268	0.252	0.066
Washington - Eastern	0.055	0.063	0.057	0.067	0.079	0.147	0.197	0.237	0.160	0.300	0.343
Washington - Western				0.001							
West Virginia - Northern	0.004		0.009	0.010					0.004		
West Virginia - Southern	0.234	0.196	0.214	0.240	0.329	0.259	0.100	0.070	0.192	0.202	0.204
Wisconsin - Eastern	0.061		0.016	0.019	0.009		0.049	0.008	0.015	0.019	0.045
Wisconsin - Western	0.015	0.020	0.026	0.018	0.027	0.022	0.009				
Wyoming	0.012	0.008	0.008	0.006	0.015	0.015	0.011	0.005	0.018	0.011	0.012

Distribution of Timestamp Difference b/w Case Filed and Case Created for 20 districts over 5.5 years
 Source: CourtListener REST API (date_created & dateFiled field). 2020.01-2025.06

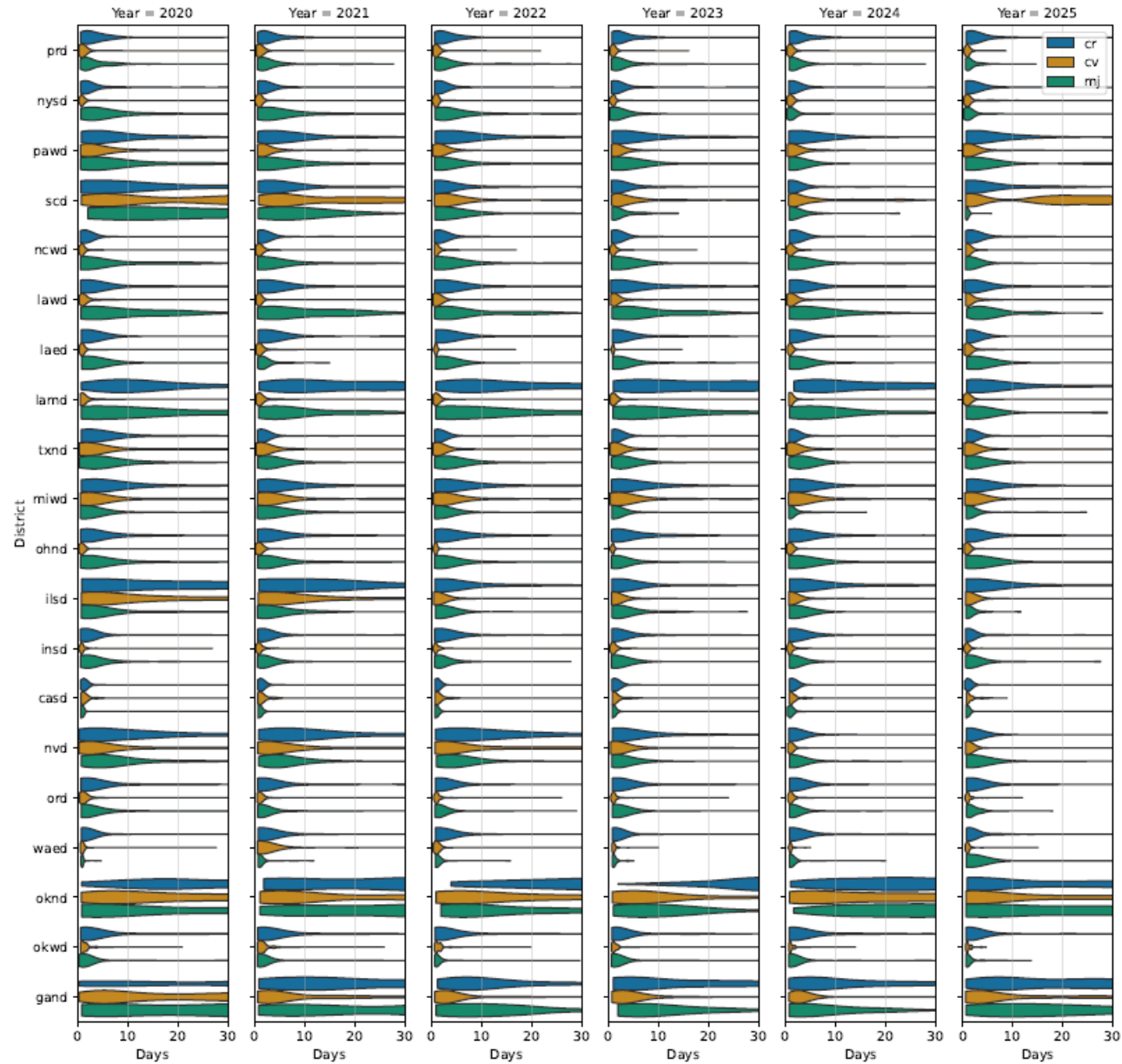


Fig. 4. Time delay between case filing and case availability on CourtListener for cases in the twenty districts from 2020 to 2024.

Precision-Recall Curves by Districts. 2020-2025 CR cases
 (Time Diff → Historically Sealed, Dot=4-day threshold, Cross=Auto threshold)
 Source: CL Time Diff. Ground Truth: IDB PROCCD Code

